

Manometers for rail cars

Type : 03420 / \varnothing 60 mm/

Application :

For gaseous and liquid media that will not obstruct the pressure system or attack copper alloy parts. They are used to measure pressures in two separate pressure systems. They are suitable for measuring pressure in the brake systems of rail vehicles. Pressure gauges are manufactured with front flange for panel mounting.

Description :

Construction

STN EN 837

Protection

IP 43, according STN EN 60 529

Connection

2 x axial (back)

Accuracy class

1,6 %

Type / Diameter / Connection / Thread / Accuracy class

03420 / \varnothing 60 mm / 2x axial / 2x M12x1,5 (G1/4") / 1,6

Allowed temperature

ambient : -20 ... +60°C

medium : max. +60°C

Material

Measuring element : 2 x bronze bourdon tube „C“

Connection : 2 x stainless steel 1.4301

Movement : brass

Case : Aluminium, black color

Visor : glass

Dial : white aluminium dial marking black
(other on request)

Pointer : 2 x aluminium black color

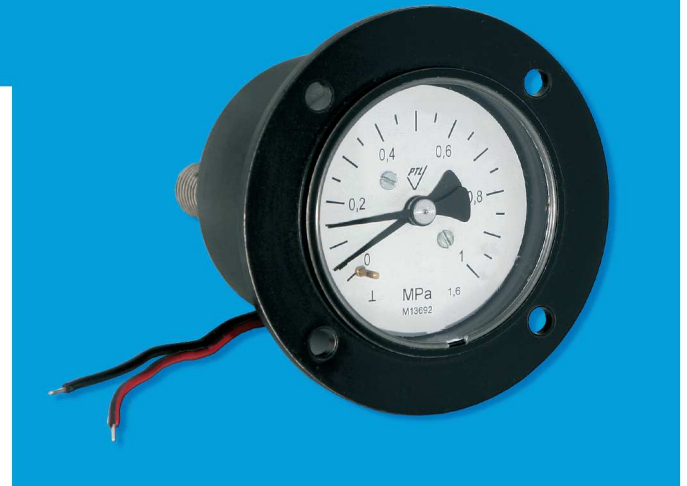
Lighting : LED diode system 24V DC

Options

- other connection (thread) as M12x1,5 or G1/4 on special request

- scala in units „bar“, „PSI“, and other

- atypical eventually double scala



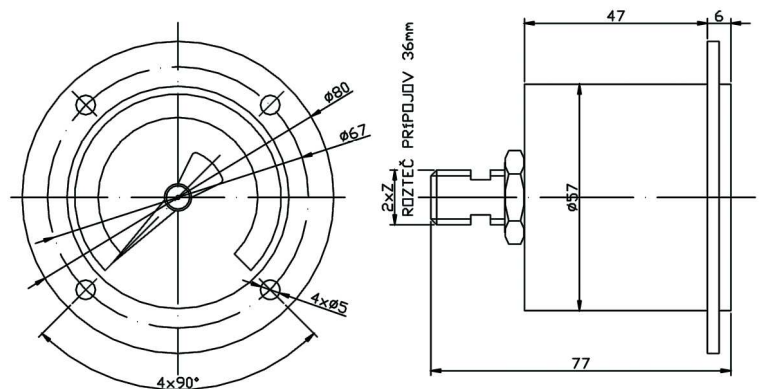
Allowed loading

Static : 75% from range

Variable : 66% from range

For a short term : 100% from range

Dimensions of manometer (mm)



Producing ranges

Type	Range	Thread „Z“
03420	0-1MPa	2 x M12x1,5 (2 x G1/4")
03420	0-1,6MPa	2 x M12x1,5 (2 x G1/4")